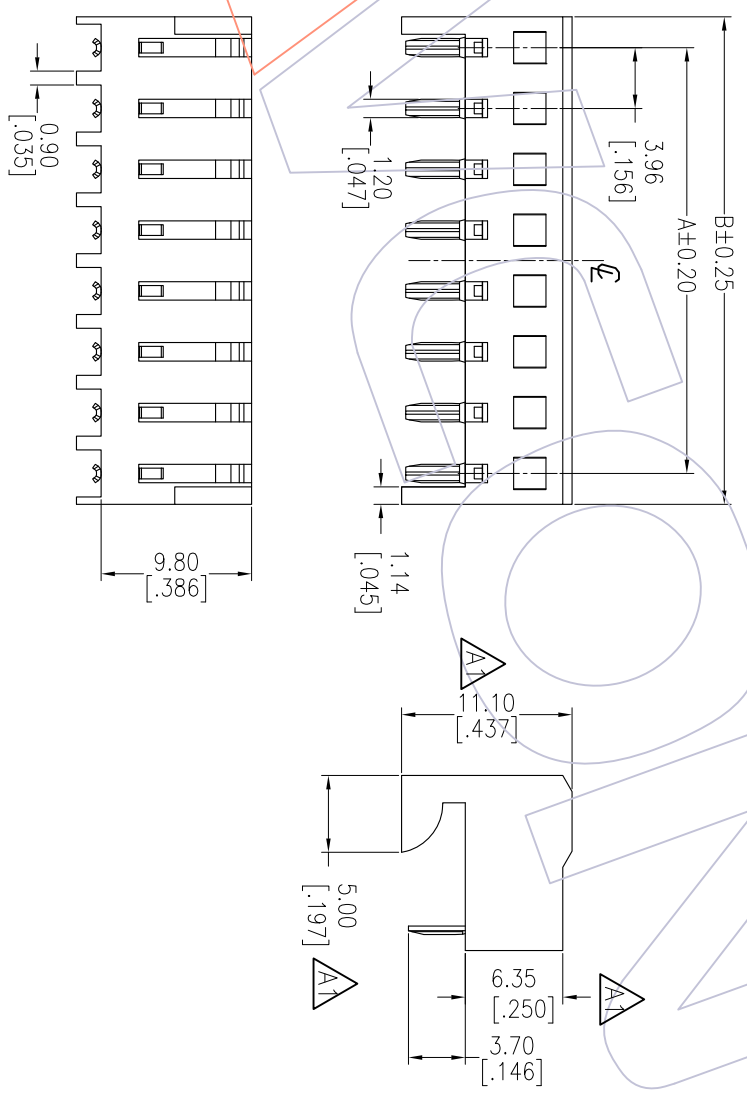
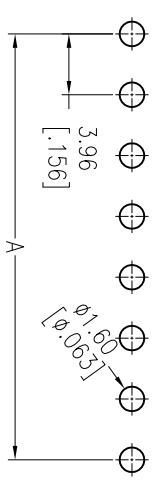
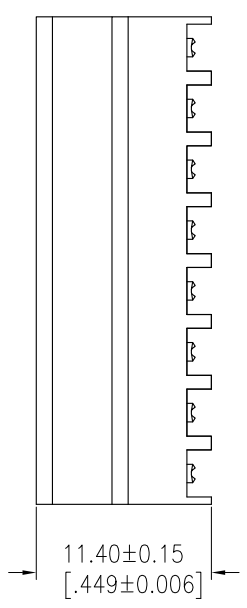




Recommended P.C.B Layout(Top Side)  
(PCB BOARD TOLERANCE±0.05)

NOTES:  
 Current Rating:5.0AMP AC/DC  
 Voltage Rating:250V AC/DC  
 Contact Resistance:20mΩ max  
 Withstand Voltage:1000V AC/minute  
 Insulation Resistance:1000MΩ min  
 Operation Temperature:-25°C to +85°C

Contact Material:Phorphos bronze  
 Contact plating:Sn Over Ni  
 Insulator Material:PA66 UL94V-0



**Ordering Information**  
 WF 3966 - WR XX XX X 1

No. of pins: 02-20pin  
 Color: B=Black, E=Beige, W=White  
 Packing: 0=PE Bag, T=Tube

Dimensional & Ordering Information:

Circuit	Part No.	Dimension	
		A	B
02	WF3966-WR02XX1	3.96	7.98
03	WF3966-WR03XX1	7.92	11.94
04	WF3966-WR04XX1	11.88	15.90
05	WF3966-WR05XX1	15.84	19.86
06	WF3966-WR06XX1	19.80	23.82
07	WF3966-WR07XX1	23.76	27.78
08	WF3966-WR08XX1	27.72	31.74
09	WF3966-WR09XX1	31.68	35.70
10	WF3966-WR10XX1	35.64	39.66
11	WF3966-WR11XX1	39.60	43.62
12	WF3966-WR12XX1	43.56	47.58
13	WF3966-WR13XX1	47.52	51.54
14	WF3966-WR14XX1	51.48	55.50
15	WF3966-WR15XX1	55.44	59.46
16	WF3966-WR16XX1	59.40	63.42
17	WF3966-WR17XX1	63.36	67.38
18	WF3966-WR18XX1	67.32	71.34
19	WF3966-WR19XX1	71.28	75.30
20	WF3966-WR20XX1	75.24	79.26

OPERATION	XX	±0.40	DRAW	MYQ	DATE	2011.12.27	SCALE	UNIT	FIT	PART NO.	SEE TAB
CHECK	XXX	±0.25	CHECK		DATE		mm	A4		TITLE:	3.96mm WAPER 90° DIP
APPROVE	XXXX	±0.15	APPROVE		DATE		1/1			CUSTOMER NO.	
ANGLE	± 3'										
CHANGE											

**WCON**  
 Http: www.wcon.com

WCON-Dongguan Tel: +86 769 85358920 Fax: +86 769 85358915 E-mail: sales@wcon.com	WCON-Kunshan Tel: +86 512 57469408 Fax: +86 512 57469468 E-mail: sales@wcon.com
---	--